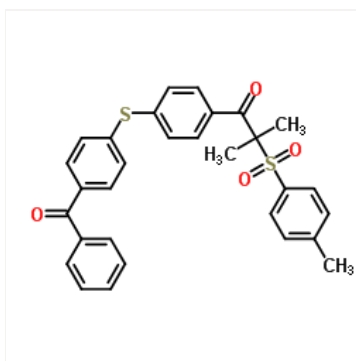


Product Data Sheet

General Information

Esacure 1001 M is a difunctional Type II photoinitiator of the ketosulphone class. It is used to initiate radical polymerisation of unsaturated oligomers e.g. acrylates after UV exposure.

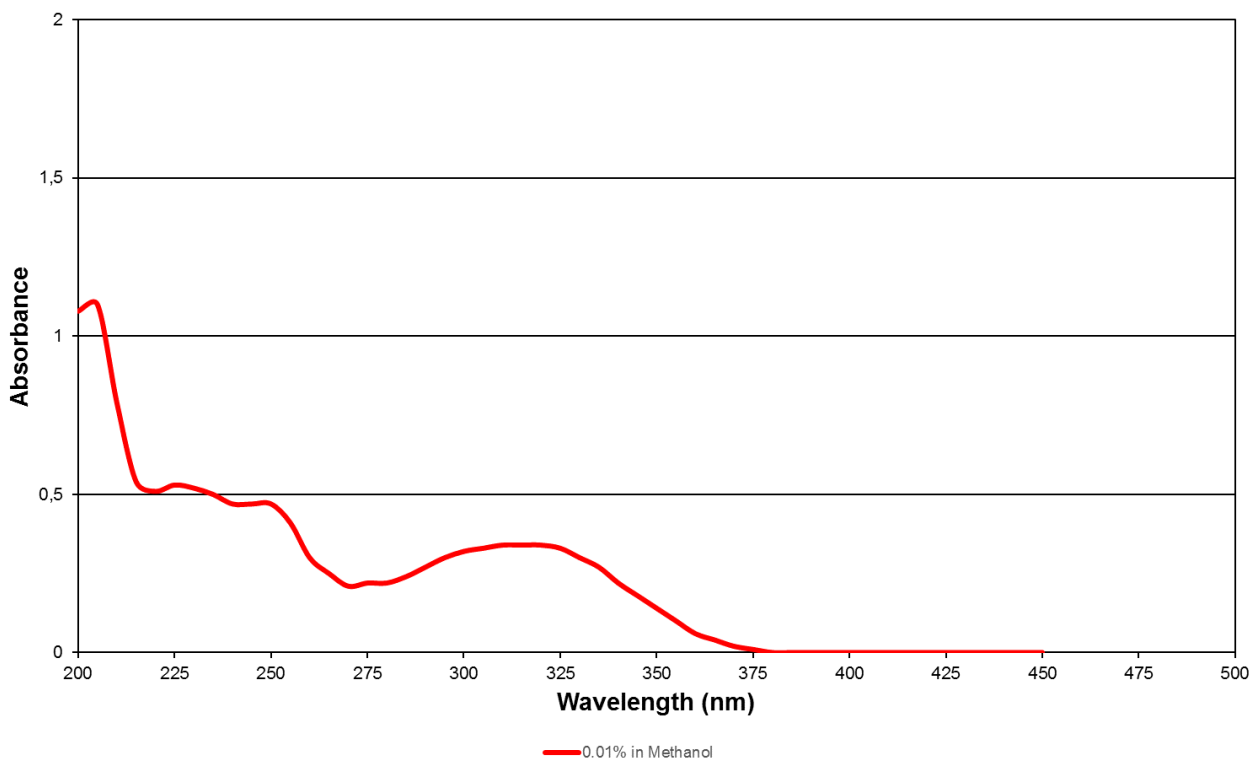
Chemical Data



Chemical Name: Difunctional Ketosulphone
Molecular weight: 515 g/mol
CAS No.: 272460-97-6

Absorption Spectrum

Esacure 1001 M



Specification

Appearance	Visual	Off white to slightly pink powder
Purity	HPLC analysis	≥ 94.0 %
Melting range	Melting Point apparatus	≥ 100.0 °C

Additional Typical Properties

Solubility: insoluble in water, soluble in most common organic solvents, monomers and oligomers for UV applications

Application

Esacure 1001 M may be used, after adequate testing, in applications like Printing inks such as off-set , flexo, screen, ink-jet inks, Acrylic clear varnishes thin and thick layers and Food Packaging

Esacure 1001 M is a high reactive difunctional photoinitiator particularly suitable for pigmented systems. Its reactivity is influenced by the presence of co-initiator that contribute to overcome oxygen inhibition too. Due to its molecular structure it is particularly suitable for all systems where low migration and low extraction values are needed (food packaging). Small amount of isopropylthioxanthone (Omnirad ITX) in combination with Esacure 1001 M increases the performance.

Formulated product properties will depend on the actual reactive monomers, oligomers and additives utilized.

Recommended Addition levels

Optimum concentration is between 2 and 5% by weight and depends on system composition, thickness, and desired cure - speed.

Formulated product properties will depend on the actual reactive monomers, oligomers and additives utilized

Storage & Handling

Storage must be in a cool, shaded, well ventilated and dry area away from direct sources of heat and sunlight.

Avoid contact with alkaline additives and water. Subject to appropriate storage under the usual storage and temperature conditions, our products are durable for at least 24 months.

Esacure 1001 M should be handled in accordance with good industrial practice. Further information is provided in the material safety data sheet which is available on request.

Regulatory Status

All information can be found on MSDS (Material safety data sheet) and RIS (Regulatory Information Sheet) available upon request.

Packaging

Esacure 1001 M is available in 15 kg cartons.

Disclaimer:

The information presented in this data sheet is given in good faith and is based on the material available to us at the time of writing. The information is not to be taken as a warranty or representation for which we assume legal responsibility, nor as permission or recommendation to practice any patented invention without a license. It is offered solely for consideration, investigation and verification.

EUROPE
IGM Resins B.V. (Head office)
T : +31 416 316 657
sales@igmresins.com

NORTH AMERICA
IGM Resins USA Inc.
T : +1 704 588 2500
sales@igmresins.com

ASIA-PACIFIC
IGM Resins Shanghai Co., Ltd.
T : +86 21 5208 0993

IGM Resins Taiwan Ltd.
T : +886 342 75275

IGM Japan GK
T : +81 3 5219 1502
sales@igmresins.com

SOUTH AMERICA
**Quiminutri Comercio de
Especialidades Químicas S.A.**
T : +55 19 3856 4480
comercial@igmresins.com.br